

Anti-CD3 hlgG1 Antibody(CH2527)

Product Information

Product Name	Anti-CD3 hlgG1 Antibody(CH2527)
Storage temp.	Store at +4°C short term . Store at -20°C long term, avoiding freeze/thaw cycles.
Catalog# / Size	GM-33037AB-10 / 10 µg GM-33037AB-100 / 100 µg GM-33037AB-1000 / 1 mg

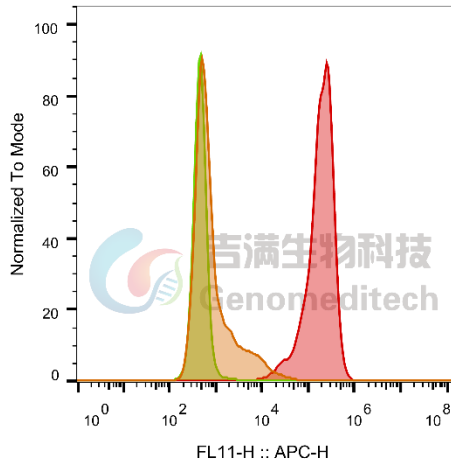
Antibody Information

Target	CD3
Antibody Type	Monoclonal
Isotype	Human IgG1, λ
Clone	CH2527
Expression System	/
Aggregation	/
Purity	> 95% as determined by SDS-PAGE
Endotoxin	< 1 EU/mg, determined by LAL gel clotting assay
Sterility	0.2 µm Filtered
Conjugate	Unconjugated
Application	Flow cytometry: 0.5 µg-2 µg /1E6 cells;
Alternative Names	CD3; CD3 T-Cell Co-receptor;CD3D; CD3E; CD3G
Description	CD3 (cluster of differentiation 3) is a protein complex and T cell co-receptor that is involved in activating both the cytotoxic T cell (CD8+ naive T cells) and T helper cells (CD4+ naive T cells). It is composed of four distinct chains. In mammals, the complex contains a CD3γ chain, a CD3δ chain, and two CD3ε chains. These chains associate with the T-cell receptor (TCR) and the CD3-zeta (ζ-chain) to generate an activation signal in T lymphocytes. The TCR, CD3-zeta, and the other CD3 molecules together constitute the TCR complex.
Formulation	Phosphate-buffered solution, pH 7.2.

Data Examples

Flow cytometry

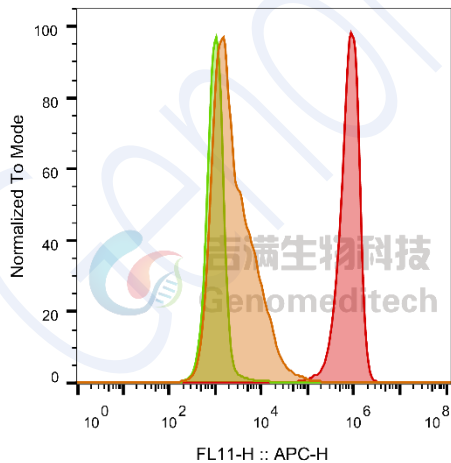
H_CD3 HEK-293 Cell Line (Catalog # GM-C30877) was stained with Anti-CD3 hlgG1 Antibody (Catalog # GM-33037AB) or isotype control antibody, followed by anti-Human IgG APC-conjugated Secondary Antibody.



SampleID	Geometric Mean : FL11-H
HEK-293 anti-CD3+APC-2nd Ab	866
HEK-293 H_CD3 H_IgG+APC-2nd Ab	476
HEK-293 H_CD3 anti-CD3+APC-2nd Ab	175927

Flow cytometry

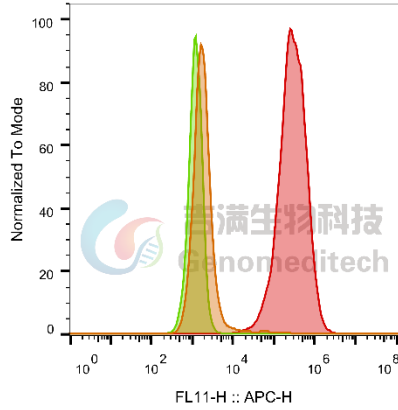
Cynomolgus_CD3 HEK-293 Cell Line (Catalog # GM-C30879) was stained with Anti-CD3 hlgG1 Antibody (Catalog # GM-33037AB) or isotype control antibody, followed by anti-Human IgG APC-conjugated Secondary Antibody.



SampleID	Geometric Mean : FL11-H
HEK-293 anti-CD3+APC-2nd Ab	2549
HEK-293 Cyno_CD3 H_IgG+APC-2nd Ab	1041
HEK-293 Cyno_CD3 anti-CD3+APC-2nd Ab	7.67E5

Flow cytometry

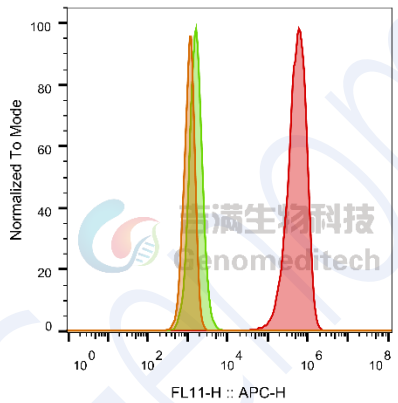
H_CD3E(Membrane Bound ECD) CHO-K1 Cell Line (Catalog # GM-C32790) was stained with Anti-CD3 hlgG1 Antibody (Catalog # GM-33037AB) or isotype control antibody, followed by anti-Human IgG APC-conjugated Secondary Antibody.



SampleID	Geometric Mean : FL11-H
CHO-K1 anti-CD3+APC-2nd Ab	1920
CHO-K1 H_CD3E (Membrane Bound ECD) H_IgG+APC-2nd Ab	1236
CHO-K1 H_CD3E (Membrane Bound ECD) anti-CD3+APC-2nd Ab	277143

Flow cytometry

Cynomolgus_CD3E(Membrane Bound ECD) CHO-K1 Cell Line (Catalog # GM-C30889) was stained with Anti-CD3 hlgG1 Antibody (Catalog # GM-33037AB) or isotype control antibody, followed by anti-Human IgG APC-conjugated Secondary Antibody.



SampleID	Geometric Mean : FL11-H
CHO-K1 anti-CD3+APC-2nd Ab	1115
CHO-K1 Cyno_CD3E (Membrane Bound ECD) H_IgG+APC-2nd Ab	1636
CHO-K1 Cyno_CD3E (Membrane Bound ECD) anti-CD3+APC-2nd Ab	5.15E5